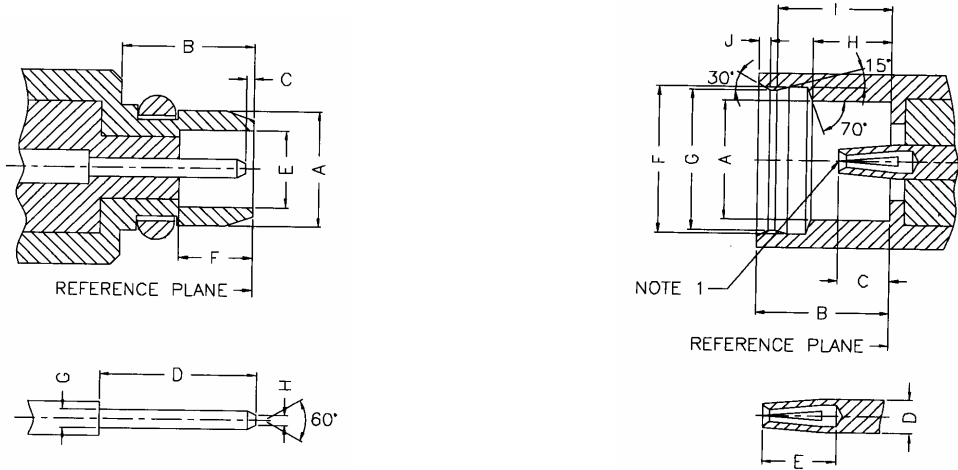


MMCX

Specification

INTERFACE MATING DIMENSIONS:



Letter	PLUG Millimeters	
	Minimum	Maximum
A	-	2.40
B	2.70	-
C	0.00	0.25
D	-	3.15
E	1.58	1.62
F	1.45	-
G	0.38	0.42
H	-	0.20

Letter	JACK Millimeters	
	Minimum	Maximum
A	2.41	-
B	2.60	-
C	0.90	1.20
D	0.68	0.72
E	1.40	-
F	3.00	3.04
G	2.87	2.90
H	1.57	1.63
I	2.30	2.34
J	-	0.23

Electrical:

Impedance	50 ohm
Frequency Range	0 to 6.0 Ghz
VSWR	0 – 4 Ghz = 1.2 max (straight) 1.25 max (right angle) 4 – 6 GHz = 1.25 max (atraingt) 1.4 max (right angle)
Dielectric Withstanding Voltage	500 V Rms min. at sea level
Contact Resistance	center contact = 5.0 Milliohms max outer contact = 2.5 Milliohms max
RF Leakage	-60 dB min
Insertion Loss	.4 dB max (straight) .6 dB max (right angle)
Insulation Resistance	1,000 Megohms min

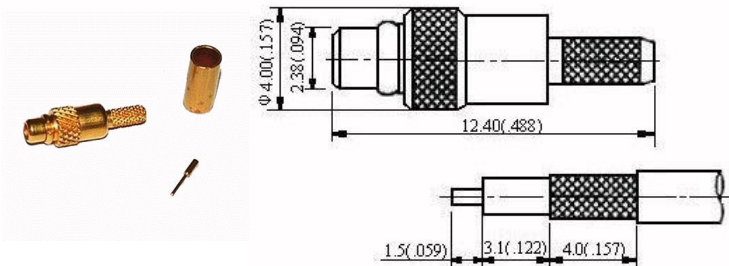
Mechanical & Environmental:

Mating	"Push-pull" snap-on coupling
Durability	500 matings
Cable Retention	RG – 174, 188, 316 – 20 lbs min
Temperature Range	-40 °C to 90 °C
Vibration	3 cycles, 3 opposite. directions 10 – 150 Hz. 10 – 60 Hz 0.75 mm/.030 min 60 – 150 Hz 10 G'S
Temperature shock	MIL-STD-202 Method 107
Humidity	MIL-STD-202 Method 103

Material:

	Material	Plating
Connector Body	Brass	Nickel or Gold
Center Contact	Male: Brass Female: Beryllium Copper	Gold
Insulation	Teflon	None
Crimp Ferrule	Annealed Copper	Same as Body

Straight Plug Crimp (MMCX)

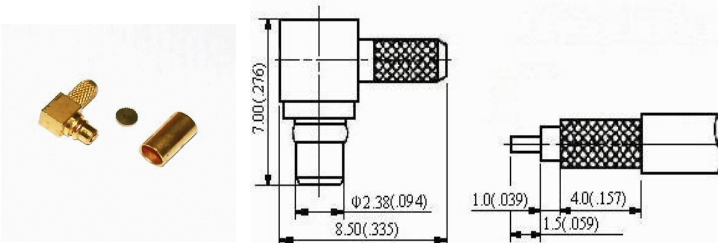


PART NO.	APPLICABLE CABLE RG/U
MMCX-1101-TGG	178, 196
MMCX-1102-TGG	174, 188, 316
MMCX-1103-TGG	RD 316u

Description:
Flexible Cable-Crimp Attachment

Finish: Gold plated center contact & body
Insulation: Teflon

Right Angle Plug Crimp (MMCX)

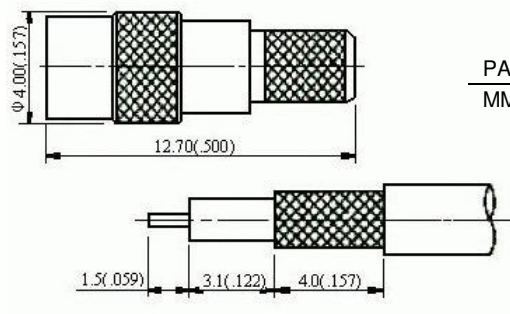


PART NO.	APPLICABLE CABLE RG/U
MMCX-1105-TGG	178, 196
MMCX-1106-TGG	174, 188, 316
MMCX-1107-TGG	RD 316u

Description:
Flexible Cable-Crimp Attachment

Finish: Gold plated center contact & body
Insulation: Teflon

Straight Jack Crimp (MMCX)

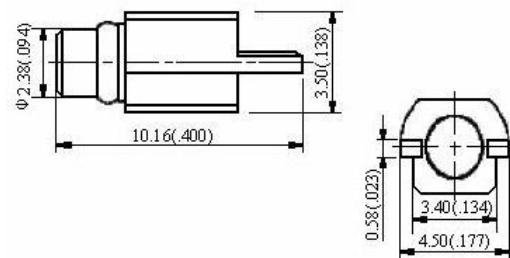


PART NO.	APPLICABLE CABLE RG/U
MMCX-1204-TGG	174, 188, 316

Description:
Flexible Cable-Crimp Attachment

Finish: Gold plated center contact & body
Insulation: Teflon

Straight Edgecard Plug (MMCX)

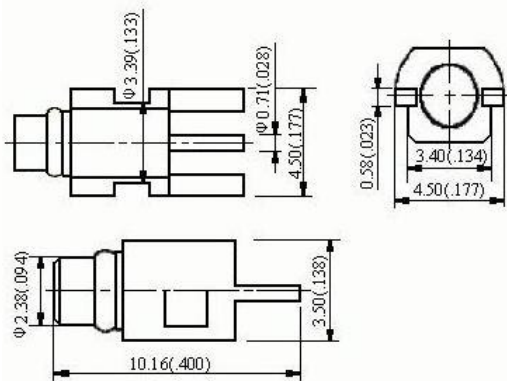


PART NO.
MMCX-5101-TGG

Description:
Edgecard Mount

Finish: Gold plated center contact & body
Insulation: Teflon

Straight Edgecard Plug (MMCX)

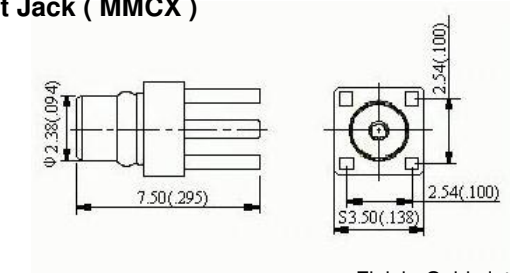


PART NO.
MMCX-5102-TGG

Description:
Edgecard Mount

Finish: Gold plated center contact & body
Insulation: Teflon

Straight PCB Mount Jack (MMCX)

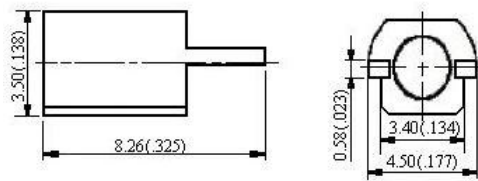
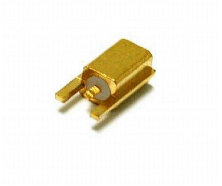


PART NO.
MMCX-5105-TGG

Description:
Edgecard Mount

Finish: Gold plated center contact & body
Insulation: Teflon

Straight Edgcard Jack (MMCX)

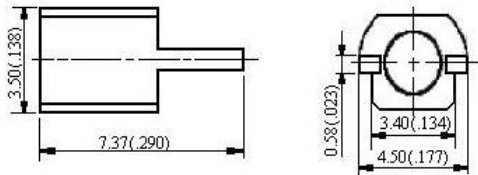


PART NO.	
	MMCX-5203-TGG

Description:
Edgcard Mount

Finish: Gold plated center contact & body
Insulation: Teflon

Straight Edgcard Jack (MMCX)

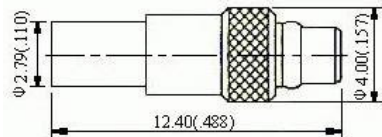


PART NO.	
	MMCX-5204-TGG

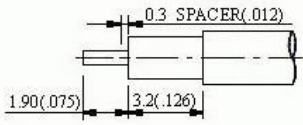
Description:
Edgcard Mount

Finish: Gold plated center contact & body
Insulation: Teflon

Straight Plug (MMCX)



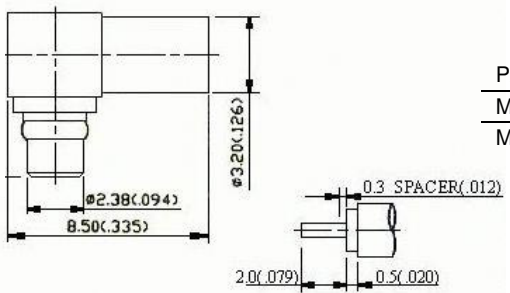
PART NO.	APPLICABLE CABLE RG/U
MMCX-7101-TGG	.086"
MMCX-7102-TGG	0.47"



Description:
Direct solder for Semi-Rigid Cable

Finish: Gold plated center contact & body
Insulation: Teflon

Right Angle Plug (MMCX)



PART NO.	APPLICABLE CABLE RG/U
MMCX-7103-TGG	.086"
MMCX-7104-TGG	0.47"

Description:
Direct solder for Semi-Rigid Cable

Finish: Gold plated center contact & body
Insulation: Teflon