

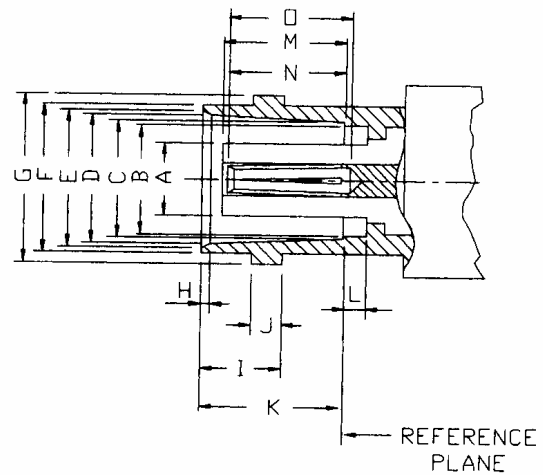
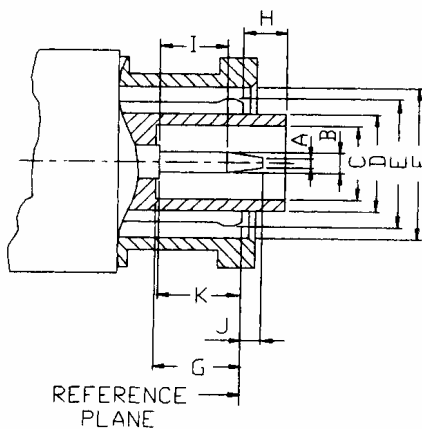
MHV

0 – 50 MHz

MHV connectors provide the user with shielded disconnects where high voltages are present, generally up to 5KV DC. The MHV has non-constant impedance characteristic and features polarized center contacts which connector with rated voltage applied will not result in electrical shock.

The MHV connectors are available in crimp, clamp and bulkhead receptacle jack and plug types. They are similar in size to, but are not intermateable with, BNC connectors. The devices are suitable for all high voltage applications up to 5KV DC.

INTERFACE DIMENSIONS:



PLUG		
Letter	Millimeters (Inches)	
	Minimum	Maximum
A	-	0.64 (.025)
B	1.32 (.052)	1.37 (.054)
C	4.83 (.190)	4.93 (.194)
D	7.06 (.278)	7.16 (.282)
E	SLOTTED AND FLARED TO MEET ELECTRICAL AND MECHANICAL REQUIREMENTS	
F	9.78 (.385)	9.91 (.390)
G	7.67 (.302)	-
H	-	2.18 (.086)
I	5.26 (.207)	-
J	-	0.13 (.005)
K	7.62 (.300)	-

JACK		
Letter	Millimeters (Inches)	
	Minimum	Maximum
A	-	4.72 (.186)
B	7.21 (.284)	7.37 (.290)
C	8.10 (.319)	8.15 (.321)
D	8.31 (.327)	8.46 (.333)
E	8.79 (.346)	9.04 (.356)
F	9.60 (.378)	9.70 (.382)
G	10.97 (.432)	11.07 (.436)
H	0.38 (.015)	0.76 (.030)
I	5.18 (.204)	5.28 (.208)
J	1.91 (.075)	2.06 (.081)
K	8.31 (.327)	8.51 (.335)
L	2.18 (.086)	-
M	7.34 (.289)	7.90 (.311)
N	6.43 (.253)	7.11 (.280)
O	6.86 (.270)	-

Electrical:

Impedance	Non-constant
Frequency Range	0 to 50 MHz
Dielectric Withstanding Voltage	5,000 volts rms max
Contact Resistance	center contact = 2.0 Milliohms max outer contact = 1.5 Milliohms max
Insulation Resistance	5,000 Megohms min

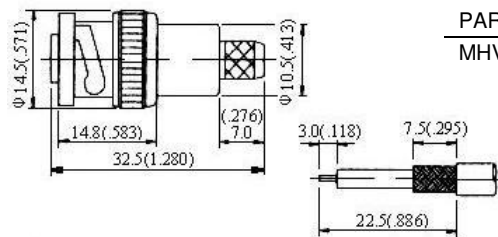
Mechanical & Environmental:

Mating	Two stud bayonet coupling
Durability	500 matings
Coupling Nut Retention	100 lbs min
Cable Retention	RG – 58, 141, 142 → 40 lbs min RG – 59, 62A → 40 lbs min
Temperature Range	-55 °C to 155 °C

Material:

	Material	Plating
Connector Body	Brass	Nickel
Center Contact	Male: Brass Female: Brass or Phosphor Bronze. Beryllium Copper	Gold Gold
Insulation	Teflon	None
Gasket	Silicone Rubber	None
Crimp Ferrule	Annealed Copper	Same as Body

Straight Plug Crimp (MHV)

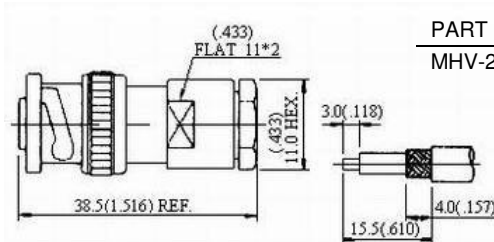


PART NO.	APPLICABLE CABLE RG/U
MHV-1101-TGN	59, 62A, 210

Description:
Flexible Cable-Crimp Attachment

Finish: Gold plated center contact & nickel plated body
Insulation: Teflon

Straight Plug Clamp (MHV)

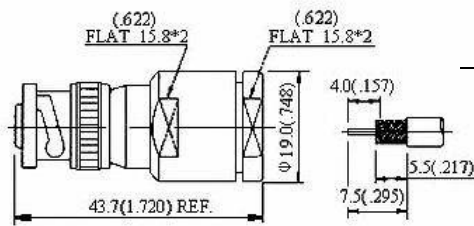


PART NO.	APPLICABLE CABLE RG/U
MHV-2102-TGN	59, 62A, 210

Description:
Flexible Cable-Clamp Attachment

Finish: Gold plated center contact & nickel plated body
Insulation: Teflon

Straight Plug Clamp (MHV)

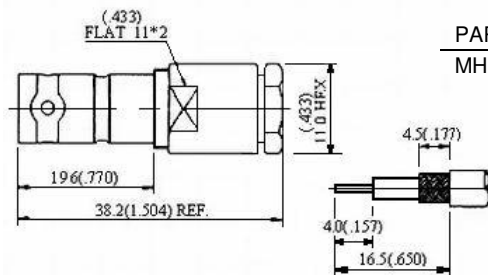


PART NO.	APPLICABLE CABLE RG/U
MHV-2103-TGN	8A, 213

Description:
Flexible Cable-Clamp Attachment

Finish: Gold plated center contact & nickel plated body
Insulation: Teflon

Straight Jack Clamp (MHV)

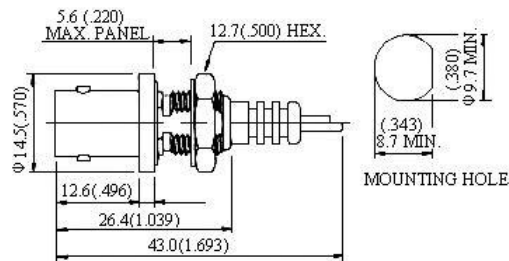


PART NO.	APPLICABLE CABLE RG/U
MHV-2201-TGN	59, 62A, 210

Description:
Flexible Cable-Clamp Attachment

Finish: Gold plated center contact & nickel plated body
Insulation: Teflon

Straight Bulkhead Jack Receptacle (MHV)

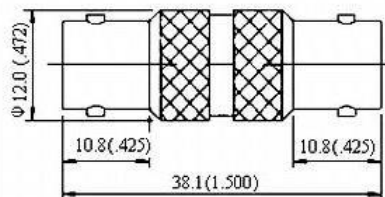


PART NO.
MHV-4201-TGN

Description:
Bulkhead Mount Receptacle

Finish: Gold plated center contact & nickel plated body
Insulation: Teflon

Jack-Jack (MHV)



PART NO.
MHV-601-TGN

Description:
In-Series Adapters

Finish: Gold plated center contact & nickel plated body
Insulation: Teflon