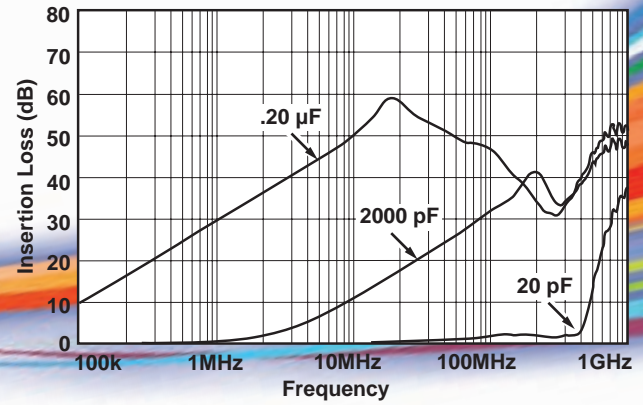


# Motor Line Feed-Through (MLFT) Filters

patent pending

## Typical Insertion Loss



## Ordering Information

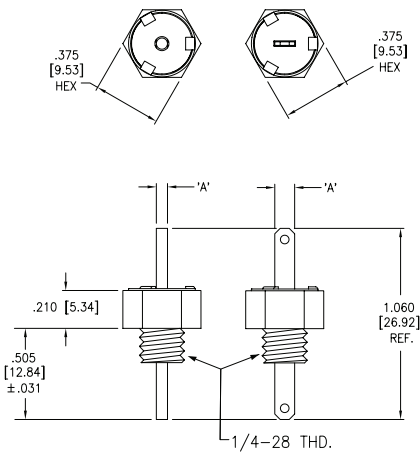
Example: **MLFT2-001-TFCAC**

The part number shown represents a single line, threaded MLFT Filter with Faston Terminals, a capacitance rating of 0.20 µF and a voltage rating of 100V.

<b>MLFT2</b>	-	<b>001</b>	-	<b>T</b>		<b>F</b>		<b>CA</b>		<b>C</b>
Motor Line Feed-Through Filter		Style		Terminal		Capacitance		Voltage Rating		
		T = Single line threaded S = Single line stamped D = Dual line stamped		R = .062 round lead F = .110 Faston		CA = .20 µF CC = 2000 pF CD = 20 pF		C = 100V		

NOTE: Current rating 25 Amps

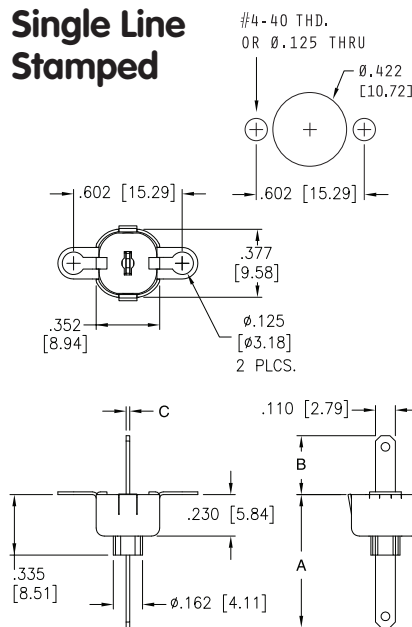
## Single Line Threaded



### Dimensions Per Termination

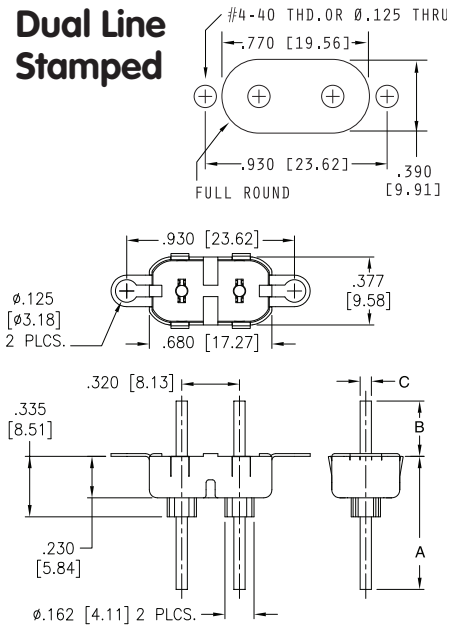
	A
.062 Round Lead	.062 (1.57)
.110 Faston	.110 (2.79)

## Single Line Stamped



	A	B	C
.062 Round Lead	.765 (19.43)	.295 (7.49)	.062 (1.57)
.110 Faston	.740 (18.79)	.320 (8.13)	.020 (0.51)

## Dual Line Stamped



	A	B	C
.062 Round Lead	.765 (19.43)	.295 (7.49)	.062 (1.57)
.110 Faston	.740 (18.79)	.320 (8.13)	.020 (0.51)



Check out the New high capacitance EMI Solution for lower voltage applications, call 888-267-1195 or visit [www.specemc.com/MLFT](http://www.specemc.com/MLFT)

8061 Avonia Road • Fairview, Pennsylvania 16415 • Phone: 814-474-1571 • Fax: 814-474-3110